



Beaufort County
Public Works
Stormwater Infrastructure
Project Summary

Project Summary: Eddings Point Road Channel #1

Activity: Routine/Preventive Maintenance

Narrative Description of Project:

Completion: Aug-15

Project improved 300 L.F. of drainage system. Cleaned out 300 L.F. of channel. Reconstructed 200 L.F. of workshelf.

2015-624 / Eddings Point Road Ch #1	Labor Hours	Labor Cost	Equipment Cost	Material Cost	Contractor Cost	Indirect Labor	Total Cost
AUDIT / Audit Project	0.5	\$11.75	\$0.00	\$0.00	\$0.00	\$6.62	\$18.36
CCO / Channel - cleaned out	20.0	\$442.59	\$74.93	\$43.68	\$0.00	\$285.90	\$847.10
HAUL / Hauling	10.5	\$233.62	\$83.90	\$169.63	\$0.00	\$151.41	\$638.55
ONJV / Onsite Job Visit	5.0	\$190.74	\$17.86	\$12.96	\$0.00	\$141.33	\$362.89
WSREC / Workshelf - Reconstructed	22.5	\$517.19	\$43.18	\$17.28	\$0.00	\$331.47	\$909.13
2015-624 / Eddings Point Road Ch #1 Sub Total	58.5	\$1,395.89	\$219.87	\$243.55	\$0.00	\$916.73	\$2,776.03
 Grand Total	 58.5	 \$1,395.89	 \$219.87	 \$243.55	 \$0.00	 \$916.73	 \$2,776.03

Before

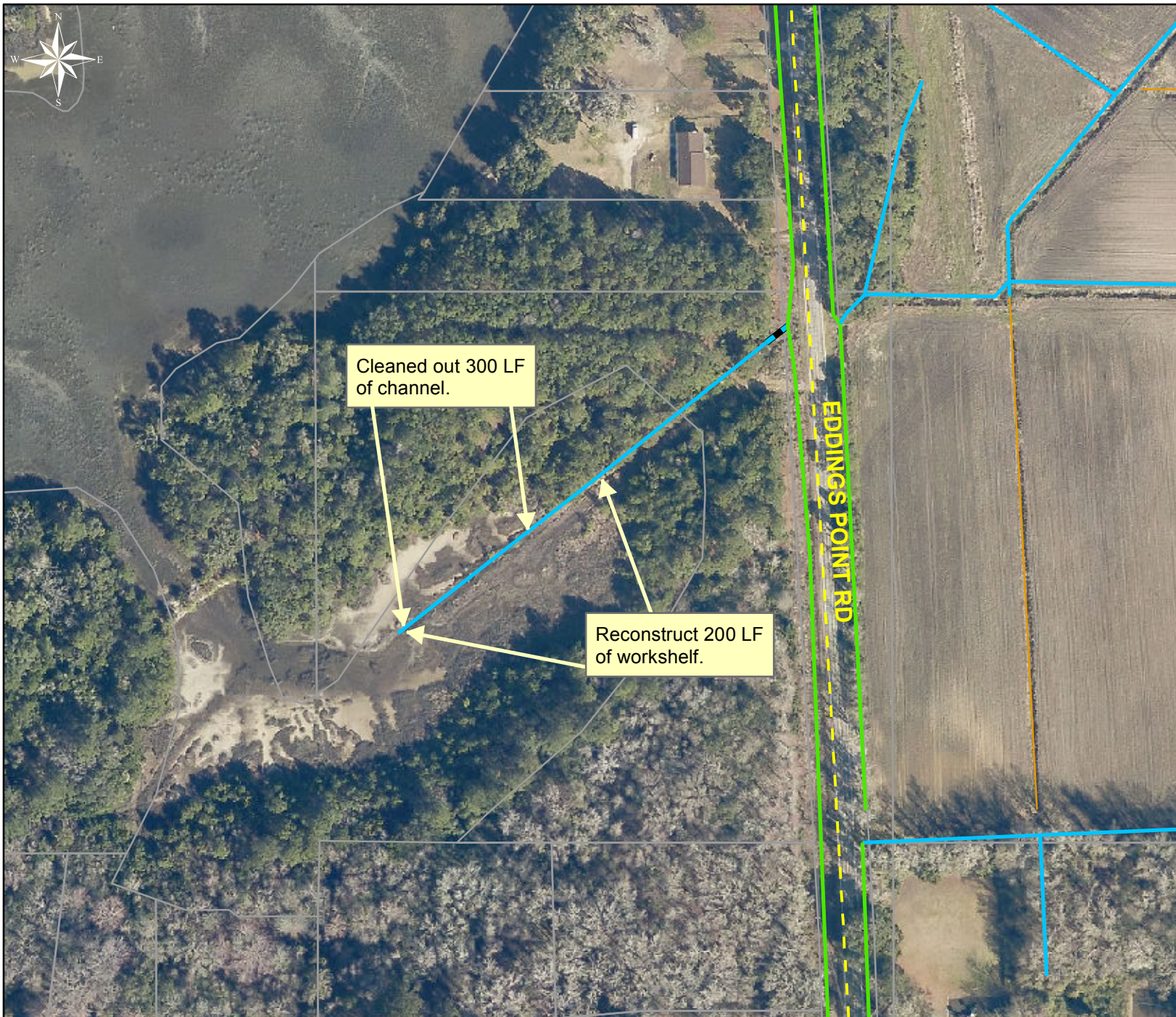


During



After





Project:Eddings
Point Road
Channel #1

Activity: Routine/
Preventive
Maintenance

Project #:
2015-624

Township:
St. Helena Island

Completed:
July 2015

Legend

Drainage Type

- Access Pipe
- Bleeder Pipe
- Channel Pipe
- Channel
- Stream
- Crossline Pipe
- Driveway Pipe
- Lateral
- Lateral Pipe
- River
- Road Pipe
- Roadside
- Roadside Pipe

0 40 80 160 240 320
Feet

1 inch = 170 feet

Prepared By: BC Stormwater Management Utility

Date Print:07/07/15

File:C:\project summaries map\Eddings Point Road Channel #1_2015-624